

# MAHONING COUNTY HOMELESS CONTINUUM OF CARE



Colleen Kosta, Coordinator

## CONTINUUM OF CARE

- Role and Purpose
- Membership
- Meetings



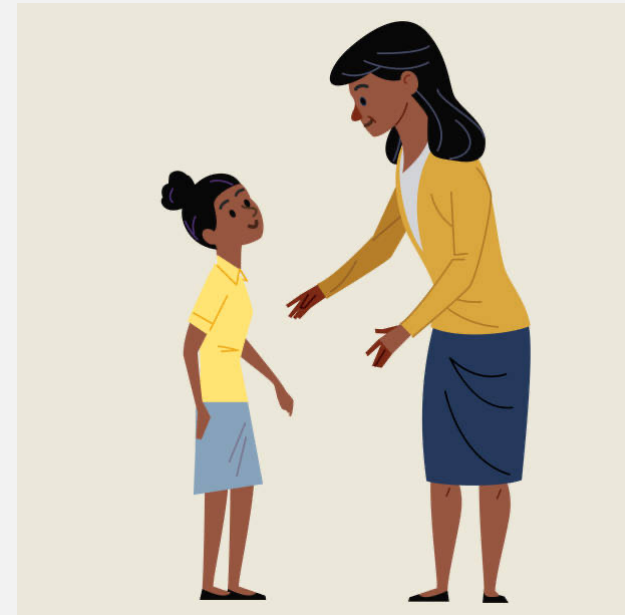
## COORDINATED ENTRY

- Call 211
- Assessment
- Housing Case Management
- Referrals



## EDUCATION LIAISON

- Designated Staff
- Enrollment
- Connect to Services



Questions or how to become a member, contact:

Colleen Kosta at

[Colleen.Kosta@mahoningcountyoh.gov](mailto:Colleen.Kosta@mahoningcountyoh.gov)