



# OHIO

Balance of State  
Continuum of Care

## Coordinated Entry Equity Initiative Kick-Off Call

**Presenters: Amanda Wilson, COHHIO**

**Rhie Azzam Morris & Julie McFarland, Equity Initiative Coaches**

Date: 5/6/2022

# Agenda

- System Level Setting - getting on the same page!
- Equity Initiative Opportunity - what it is, and where we're at
- Q&A



# Agenda

- **System Level Setting**
- Equity Initiative Opportunity
- Q&A

# What is a Continuum of Care?

*A community plan* to organize and deliver housing and services to meet the specific needs of people who are homeless as they move to stable housing and self-sufficiency. It includes action steps to end homelessness and prevent a return to homelessness.

*A system of programs and resources* in a geographic area designed to address and end homelessness. Parts of a continuum:

- Outreach, intake, and assessment
- Emergency shelter
- Transitional housing with supportive services
- Permanent and permanent supportive housing

# What is a Continuum of Care?

*A planning body* organized to carry out the responsibilities prescribed in the CoC Program Interim Rule for a defined geographic area.

*The CoC Program* is the largest federal program providing grants to homelessness assistance projects.

# Coordinated Entry Definition

Coordinated Entry (CE), also known as coordinated intake, coordinated systems, or coordinated assessment...is a process or system that coordinates entry into, movement within, and ultimately exit from a homeless system. Coordinated Entry processes increase the efficiency of a homeless assistance system by standardizing access to homeless services.

# Coordinated Entry and the CoC

- A Continuum of Care (CoCs) is expected to address homelessness through a coordinated community-based process of:
  - Identifying needs
  - Building a system of housing and services that meet those needs with the goals of ending and preventing homelessness.



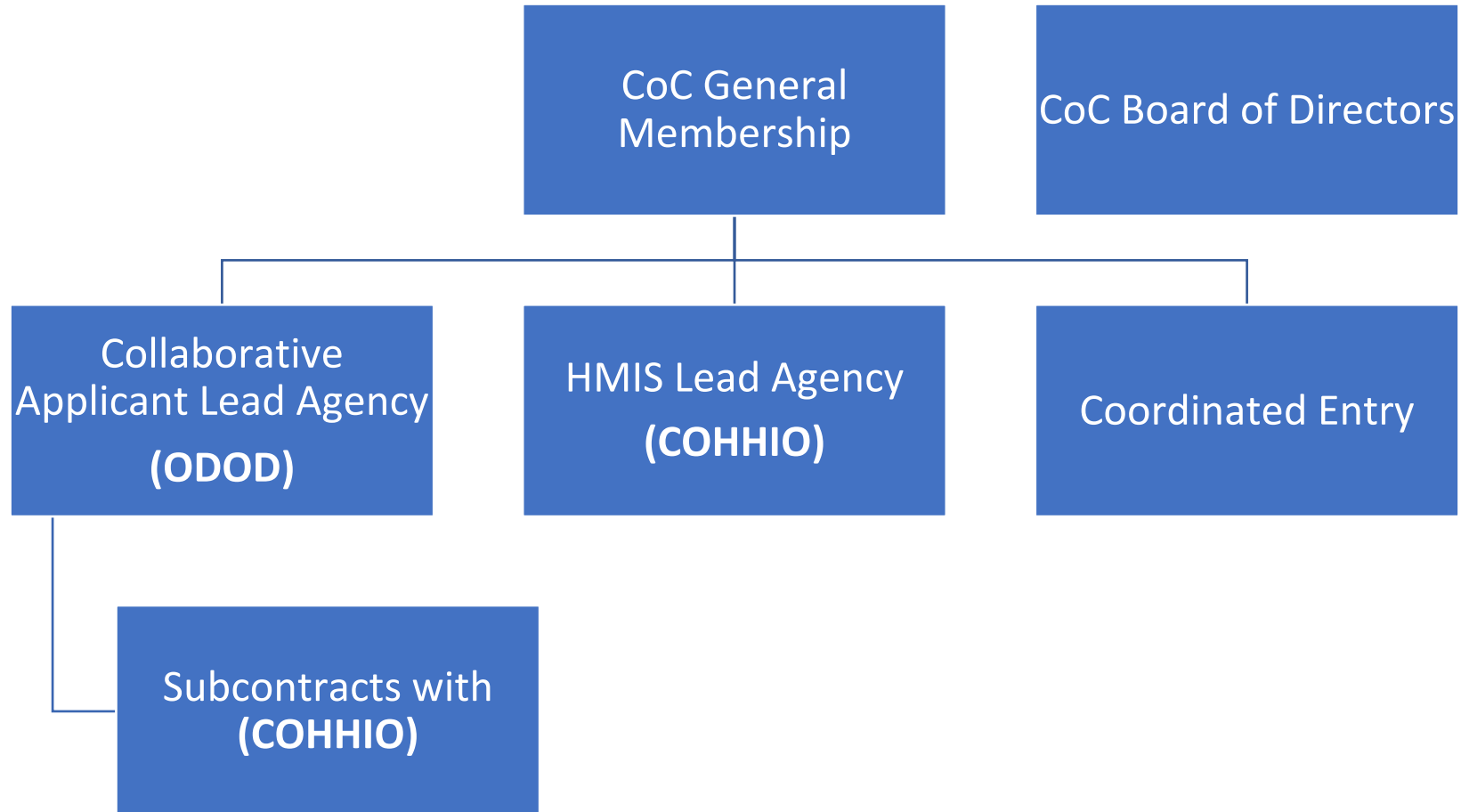
# Coordinated Entry Key Elements

- Prioritize households with greatest needs
- Include projects that serve all household types and target populations
- Provide easy access through street outreach, hotlines, and physical locations
- Use standardized assessments that are person-centered
- Have a fair and equal referral process
- Lower barriers to entry using a Housing First approach to enrollment and service delivery

# Ohio Balance of State Continuum of Care

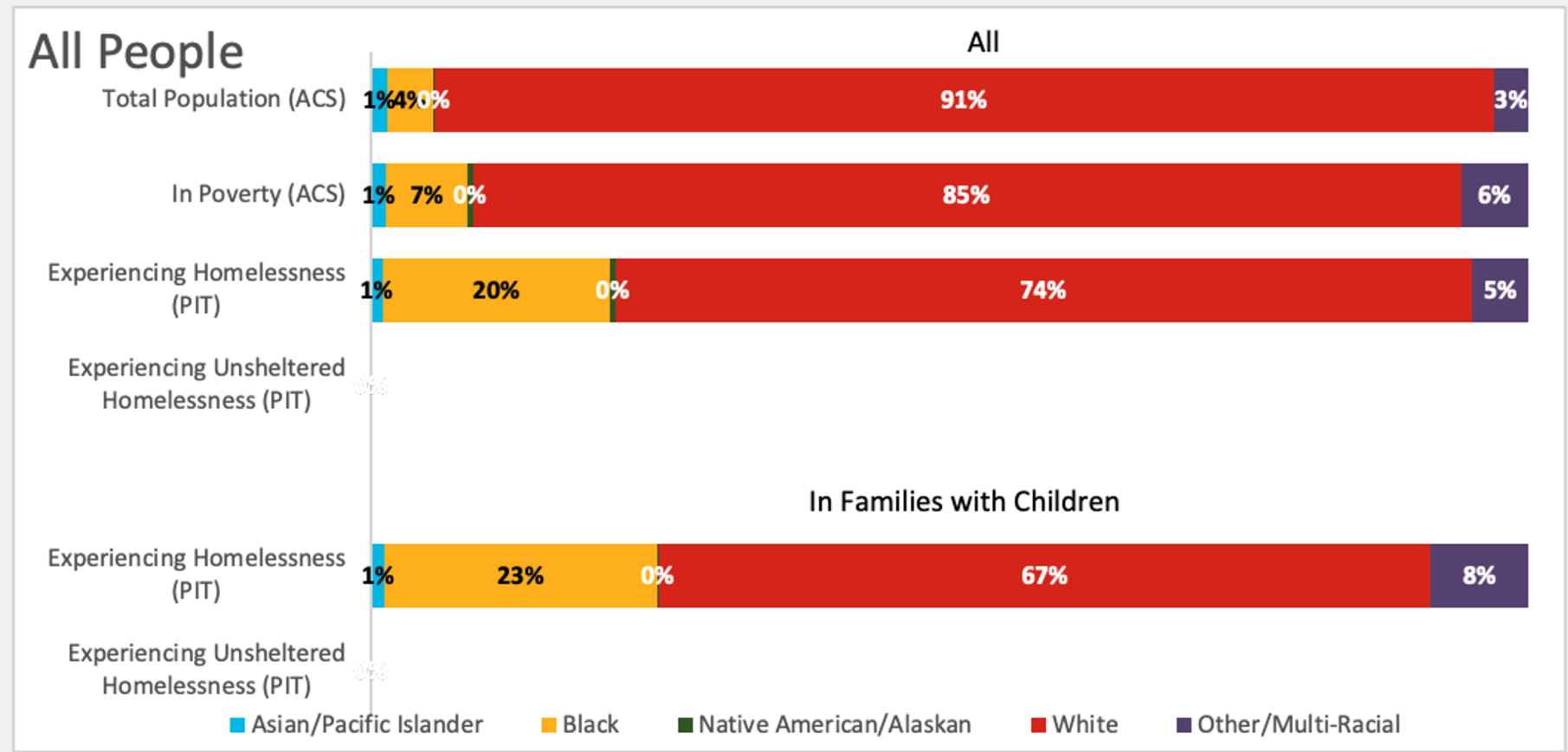
- The Ohio Balance of State Continuum of Care (BoSCoC) represents the **80 non-urban counties in Ohio**.
- The 80 counties within the Ohio BoSCoC are divided into **17 Homeless Planning Regions**.
- These Homeless Planning Regions are responsible for implementing coordinated entry in their communities
- The Ohio BoSCoC currently has eight standing committees/workgroups in addition to the CoC Board.

# Ohio BoSCoC Structure and Organization



# Racial Disparities in the Ohio BoSCoC

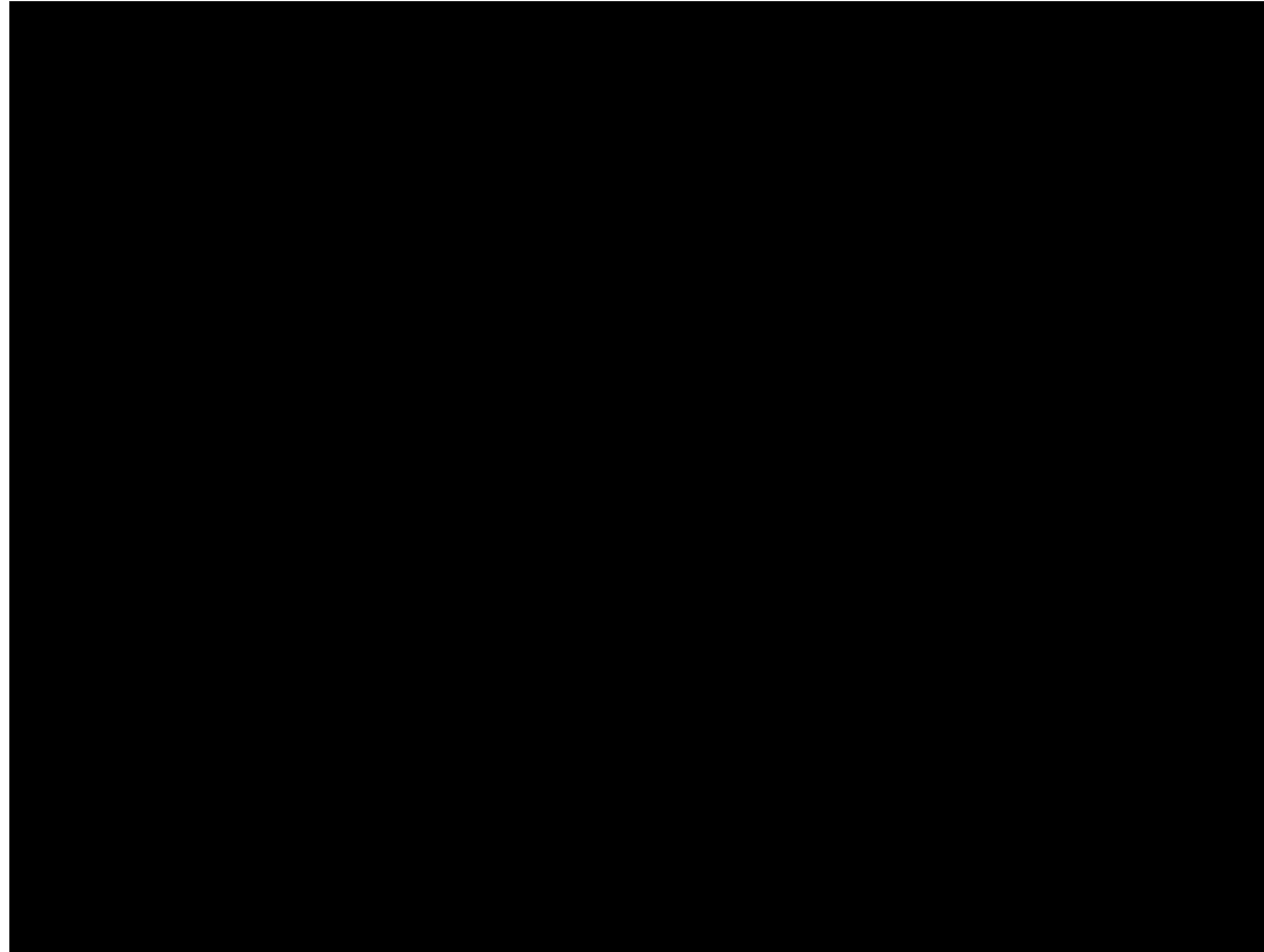
## CoC Distribution of Race



# Agenda

- System Level Setting
- **Equity Initiative Opportunity**
- Q&A

# What is the HUD Coordinated Entry Equity Initiative?



# Ohio BoSCoC Was Selected!

- Ohio CoC's are participating in the initiative as part of a near statewide effort
  - 8 of Ohio's 9 CoCs are participating

# Draft Statewide Goal Statement

By October 2022, the Ohio statewide Racial Equity Team will address inequities in the access, assessment and prioritization phases of Coordinated Entry by:

- 1) Centering people with lived expertise and Black, Indigenous, and people of color to make/co-design decisions and serve as accountability partners.
- 2) Determining agreed-upon statewide measures to evaluate and analyze our local data.
- 3) Adopting a process for developing and evaluating a racially equitable assessment and prioritization tool that is designed and administered with an equity lens.



# Ohio BoS CoC CE Equity Initiative Core Team

- Has been meeting twice monthly since March
- Outlined some shared values
- Completed a power mapping exercise

# Community Experiences

- Where we were
  - Race Equity Task Force
- What we did
  - Community Charter
  - Continued work of [Austin Prioritization Index](#)
- Where we're going next
  - Piloting API with CQI
  - Specified outreach and navigation

# Agenda

- System Level Setting
- Equity Initiative Opportunity
- **Q&A**

# Questions?

# Ohio BoSCoC Staff

**Erica Mulryan**

CoC Director

**Hannah Basting**

CoC Coordinator

**Amanda Wilson**

CoC Coordinator

**Carolyn Hoffman**

Technical Assistance & Training  
Coordinator

**Trevin Flickinger**

HMIS Data Analyst

**Matt Dicks**

HMIS Technical Assistance and  
Training Support Coordinator

**Monica Tillis**

HMIS Support Coordinator

# Contact Us



**CoC**

[ohioboscoc@cohhio.org](mailto:ohioboscoc@cohhio.org)

**HMIS**

[hmis@cohhio.org](mailto:hmis@cohhio.org)