

Miller Community House

A program of Family & Community Services, Inc.

Portage County • Kent, Ohio

Understanding Family Homelessness 101

Emergency Homeless Shelter Programming:

Anne Face

Associate Director, Family & Community Services, Inc.





MISSION

Family & Community Services, Inc. seeks to strengthen, empower and enrich the lives of individuals and families through a broad continuum of services.

VISION

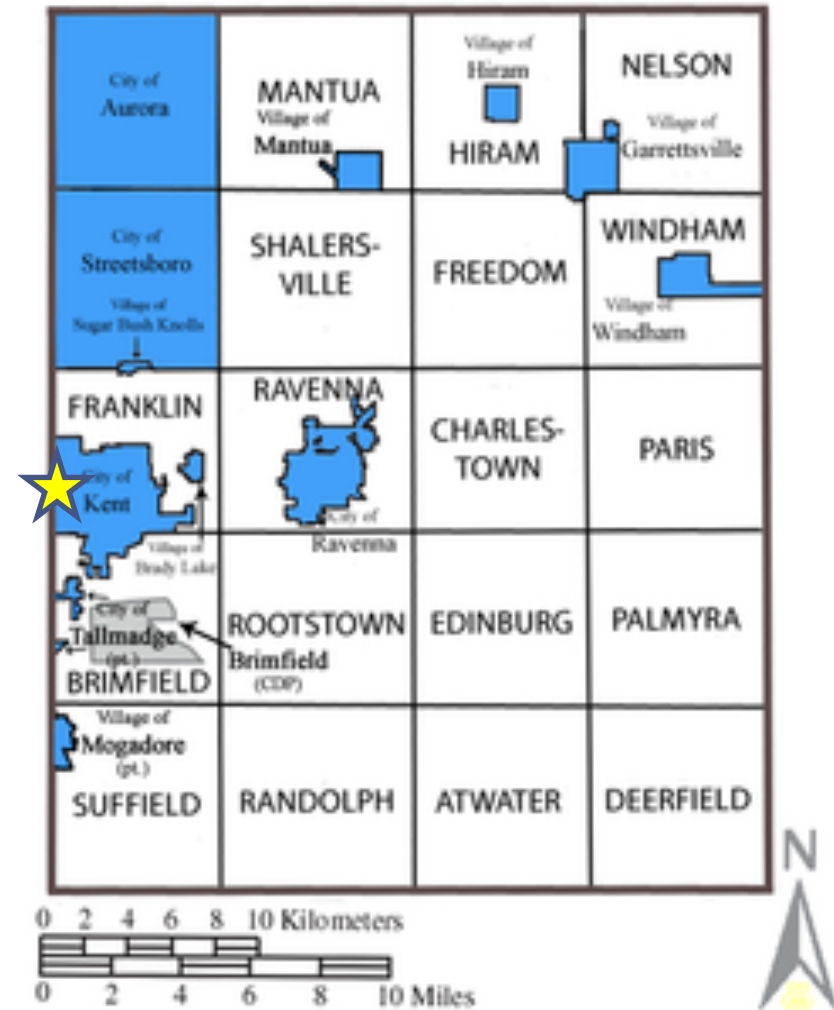
Family & Community Services, Inc. will effectively respond to community needs by advocating for social awareness and social action in four primary areas: Engaging and Empowering Communities; Strengthening and Supporting Individuals and Families; Focusing on the Futures of Children, Dependents and Youth; and Providing Tools for Healthier Lives. Action outcomes include striving towards achieving a high level of dignity and satisfaction for our clients, developing innovative partnerships, promoting volunteerism, and maintaining a strong financial position.

Strengthening & Supporting Individuals & Families

- Center of Hope/Christian Cupboard
- Kent Social Services/Lord's Pantry
- Mobile Meals & Meals in Motion
- County Clothing Center
- Housing & Emergency Support Services
- Safer Futures & Place of Peace
- Someplace Safe & Solace Center
- Miller Community House
- Freedom House, Valor IOP & Valor Homes of Summit & Lorain
- White House & Miss Liberty
- Supportive Services for Veteran Families
- Portage Area Transitional Housing
- Next Step
- Property Management
- Safe Path



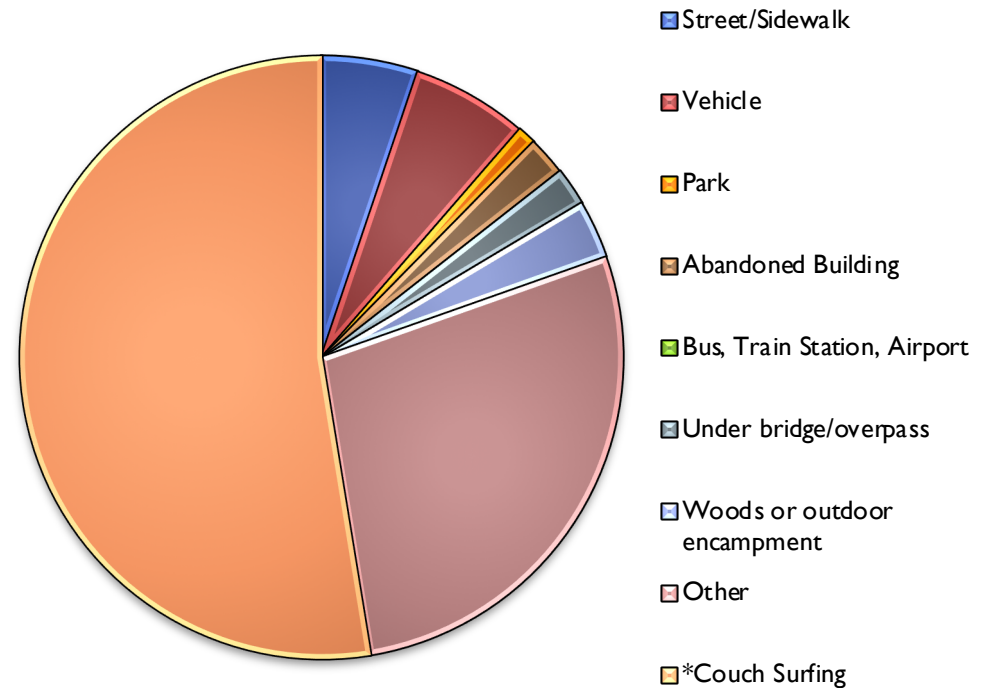
Portage County



Portage County PIT Count: 2019



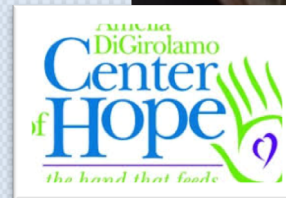
Where are you sleeping tonight?



Rural creativity...



Kent
Social Services
Services from the heart



MCH is the only 24/7/365
Access Point for Portage County.

Miller Community House

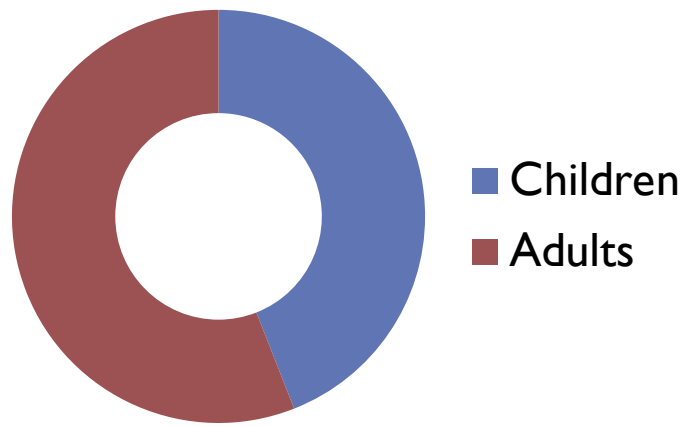
Miller Community House provides emergency shelter to individuals and families of Portage County in a housing crisis. MCH provides support, advocacy, and referrals to encourage self-sufficiency and movement toward permanent housing.



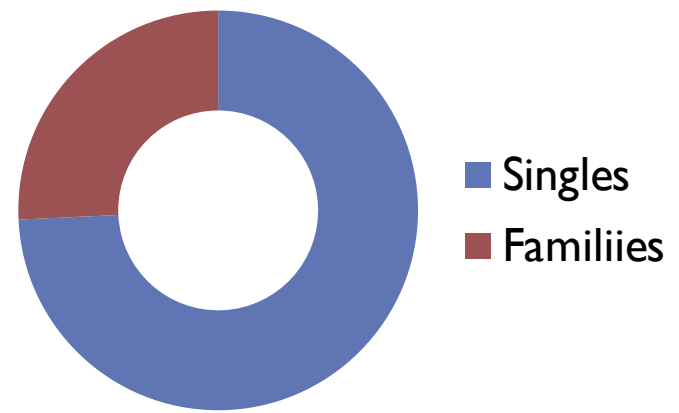
*Portage County offers specialized shelter services for veterans and victims of domestic violence. MCH serves anyone experiencing homelessness.

Served

People



HH Type



HOME



DROP IN



Shelter type



This is shared space, large & comfortable. During business hours television and/or electronics are not permitted to be used in order to encourage residents to work on their housing goals. Staff are available 24/7/365.

Living Room



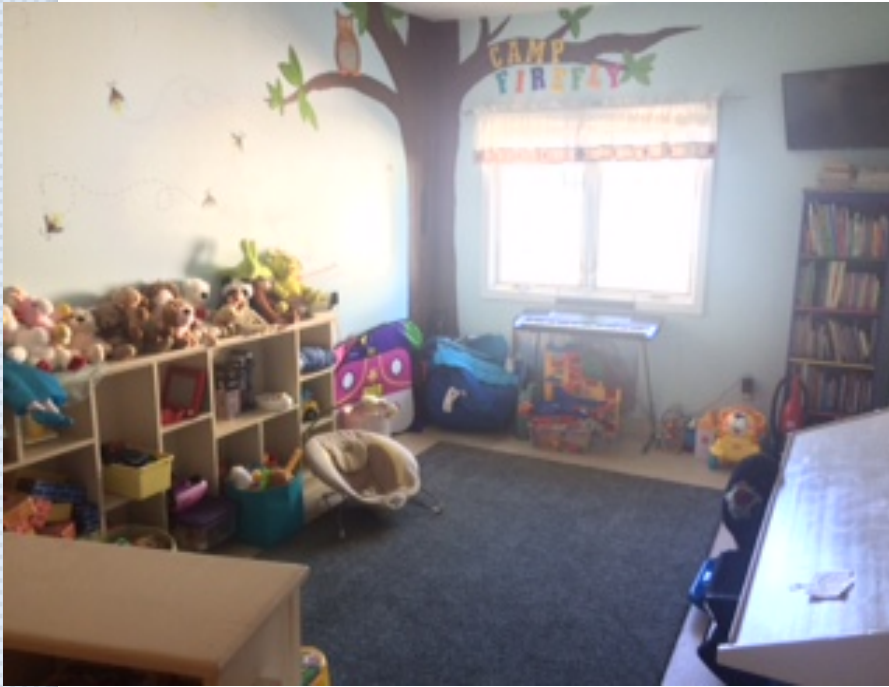


Kitchen & Dining Area



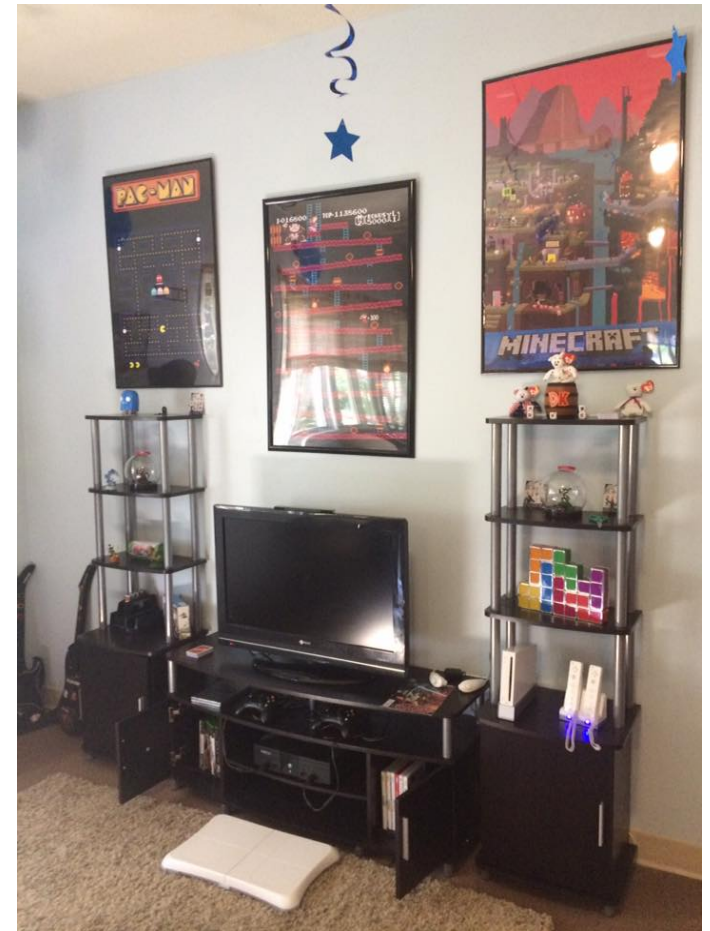
Residents prepare their own meals and eat together or on their own.

Organizations, families and church groups often provide cooked meals to help out



Firefly Youth Room

Space provided for
children of all ages!

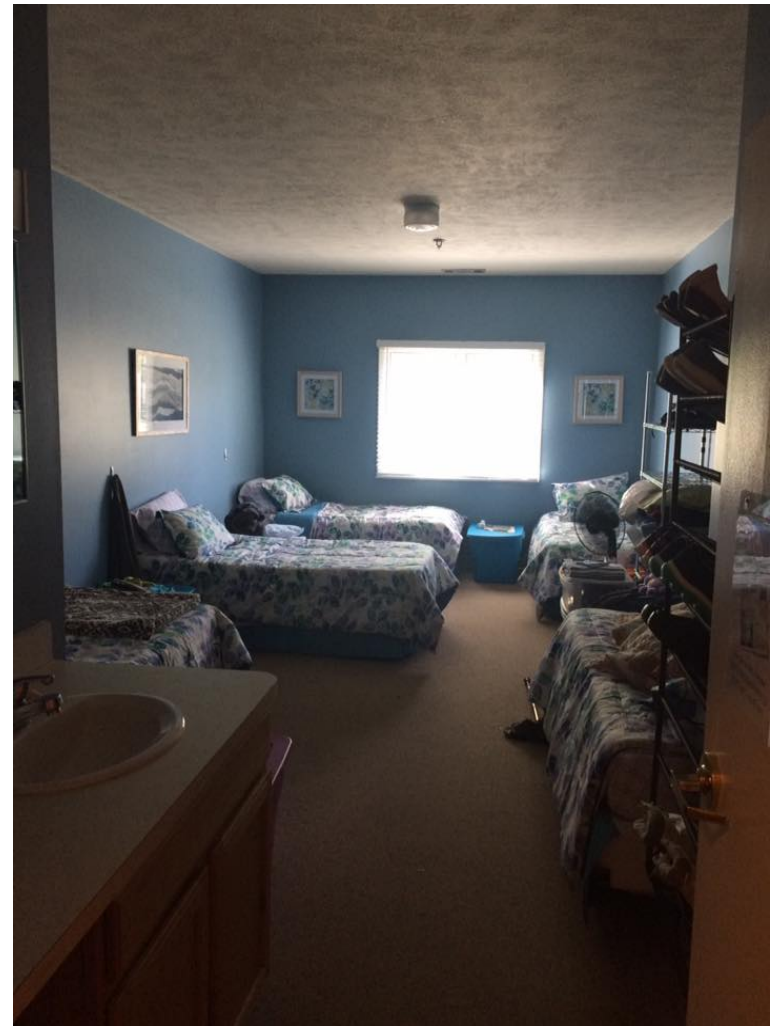


DeRoia Gaming Center





Single Adult: Female Room



A shared bedroom space for up to 5 who identify themselves as female.

35-40 Single Females call MCH home annually



3 rooms for families with children:
Oak: 1 bunk, 1 double bed
Birch & Cedar: 2 bunks, 3 twin
beds each

Shelter Staff

- Program Manager
- Case Manager
- Child Advocate*
- Specialists

*as funding allows

Shelter Services

- 24/7 Staffing
- Case Management
- Advocacy & Outreach
- Child Advocacy
- Self Care
- House Meetings

Challenges in family homelessness

- Funding
- Fear of entering shelter
- Wait to get into the shelter
- Schools
- Space
- Transportation
- Child Care
- Housing Options
- Employment

Successful Interventions

- Advisory Board
- Relationship with schools
- Relationship with JFS
- Relationship with transportation
- Relationship with resource centers
- Relationships with churches



Successful Interventions

- Building/buying property
- Strong community housing teams-sharing resources
- Staying on top of trends
- Partnering with other agencies



Future

- Funding cuts
- Increase needs

CONTACT

Anne Face

aface@fcsserves.org