

Addressing Family Homelessness

Melissa Humbert-Washington

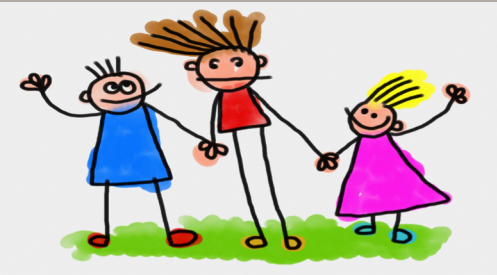
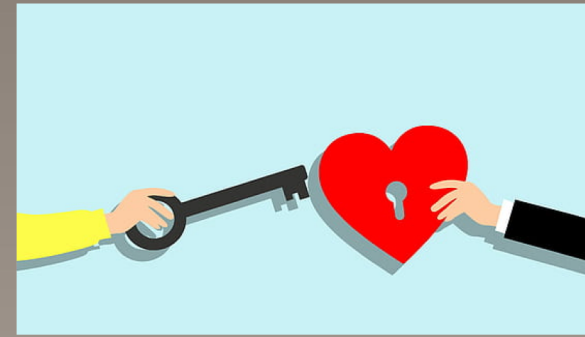
Director of Programs and Services

Homeless Families Foundation



What We Do

- Rapid Re-Housing for Families
- Programming for Transition Age Youth (TAY)
- Programming for Pregnant Women
- Family Stability/Beyond Housing
- Educational Programming



Rapid Re-Housing for Families

- Funded by the Community Shelter Board
- Clients are referred from shelter through Coordinated Entry
- 223 Families served last year



TAY

- YHDP Community, Round 2
- CSB funds
 - HFF-all pregnant/parenting, TH and RRH
 - YMCA-RRH for single youth
 - Huckleberry House-TH for single youth
 - TH-4 Units that started in March, 19 more in May (13 single, 6 pregnant/parenting), 4 more to come in the fall
- Goal is to serve 166 households in the first year.



Kenmore Unit



22nd St. Unit



Programming for Pregnant Women

- Healthy Beginnings at Home (HBAH)
 - Pilot Project with Caresource, Celebrate One/City of Columbus (funding from OFHA), CMHA
 - Women were screened by Step One, then referred to HFF
 - 100 women served; 50 in intervention, 50 in control group
 - Pilot will conclude December 2020



Programming for Pregnant Women



- Homeless Prevention for Expectant Mothers
 - Funded by CSB
 - Women can be referred by Gladden Community House HPP, Moms 2 Be, or Center for Healthy Families
 - Served 53 families last year



Family Stability/ Beyond Housing

- Flexible programming for families who need additional help with housing stability
- More time, more money, more case management, ability to pay for expenses that are otherwise not allowable
- Transportation, utilities, additional rent, employment expenses, childcare, etc.
- Food Pantry
- All clients of the agency are served in some capacity



Successes

- Dedication to clients during the pandemic
 - Agreeing not to close any cases
 - Case managers reaching out for even more frequent contact
 - Clients still moving into housing
 - New emergency funds to help, both internal and within our community



Challenges

- Housing stock and cost
- Client barriers
- Large pool of rental applicants
- Employment



Next Steps- Partnership

- HFF is in the beginning stages of a partnership with a private landlord to dedicate a set number of units in a large apartment complex for our RRH clients.
 - This will eventually be a supportive community model with other partners and services on-site.



Next Steps- Diversified RRH

- HFF has received funding for a new RRH program with families, focused on serving those with the highest barriers. This program will allow for more intensive case management and longer terms of financial assistance.



Next Steps-Housing and Education

- HFF has also received funding for a partnership with Columbus State Community College, to provide housing assistance to students who are at risk of having to drop out of school due to housing instability.
 - While some of these students might be TAY with no children, we anticipate that a good number of these will be non-traditional students with families.



Next steps- Employment

- HFF has hired two Employment Navigators to assist our housing clients and case managers.
- Main focus on serving our TAY population, because of their age and vulnerability, but we have the capability to serve any family.



Next steps- Employment(continued)

- We are asking them to concentrate on four things:
 - Building partnerships with existing employment programs in the area.
 - Building partnerships with area businesses
 - Surveying existing clients
 - Providing individualized employment case management



Contact Info

Melissa Humbert-Washington

mhumbertwashington@homelessfamiliesfoundation.org

