

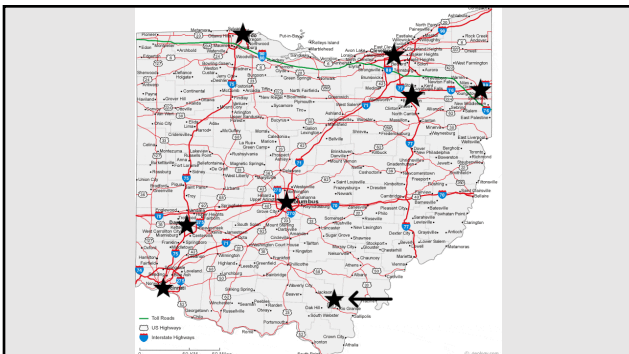
Invisible Crisis: Youth Homelessness in Rural Communities

Lisa Brooks
Sojourners

“Most rural counties lacked services designed specifically for youth experiencing homelessness, forcing young people to go without help or travel to distant locations to seek support.” —VoYC-Rural







Definition of *Invisible*:

*Incapable by nature of
being seen : not
perceptible by vision*

How do we find them?



“Traditional count methods can be supplemented by creative identification approaches such as greater collaboration with schools, colleges, other public systems, faith-based organizations, and community service organizations to reach and survey youth.” -VoYc

Post Offices	Health Care Clinics & Mobile Units	Movie Theaters
Police department	Child Advocacy Centers	Shopping Centers
Libraries	Child Welfare Agencies	Thrift Stores
Emergency rooms	Child Day Care Centers	Skateparks
JFS	Drug and Alcohol Centers	Gyms
WIC	Public Transportation Agencies (bus stations, taxi services, etc.)	Bike Paths
High Schools	Developmental Disabilities Entities	Bowling Allies
Laundry Mats	Drug an Alc. Mental Health Boards	Walmart
Churches	Parole & Probation	Gas Stations
Court Houses	Boards of Education	Coffee Shops
City/Village Hall	Rest Stops	Youth Centers
Colleges	Truck Stops	Community Centers
Vocational Schools	Drug & Alcohol Tx Centers in-patient and out-patient	Health Departments
Food Banks	Parks	YMCA's
Community Actions		City Pools
Family and Pregnancy Resources Centers		Campgrounds
		RV Parks

“In rural communities, changes like the collapse of an industry or the emergence of a substance use epidemic can have profoundly destabilizing effects on disadvantaged families, which, in turn, can shape young people’s trajectories into homelessness.” -VoYC



“Among all of the evaluations we identified, none had specifically tested the impacts of programs or practices in rural contexts, though many explicitly assessed interventions in urban areas” -VoYC



Current Programs:

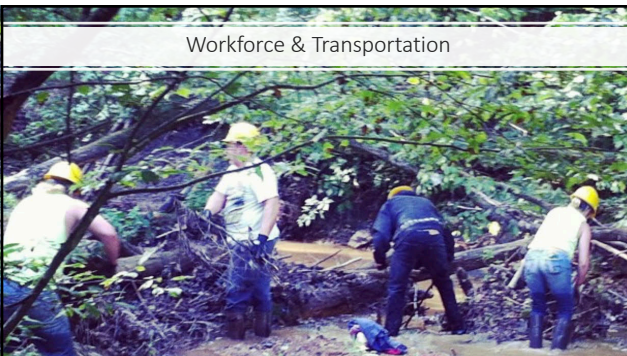
- Permanent Supportive Housing (PSH)
- Youth Homelessness Demonstration Project (YHDP)
- Crisis Transitional Housing (C-TH) Emergency Shelter
- Supportive Services Only (SSO-CE) Street Outreach team
- Rapid Re-Housing (RRH)
- Transitional Housing (TH)
- Basic Center Program (BCP)
- Transitional Living Program (TLP)
- Outreach Centers (VOCA)
- YouthBuild (YOSO)
- Bridges

“Additionally, the small counties did not report any drop-in centers for youth experiencing homelessness (unlike medium- and large-sized counties), yet these types of services can function as essential access points for youth experiencing homelessness and connect them to a wider array of services.” -VoYC

The strengths & challenges of outreach



Workforce & Transportation



How do programs
operate with limited
resources?



Supporting staff

*"Strengthen the rural
public health system's
ability to address the
trauma, substance use,
and mental health
issues that touch the
lives of young people"*



