

Housing Ohio 2017

Rapid Re-Housing Institute

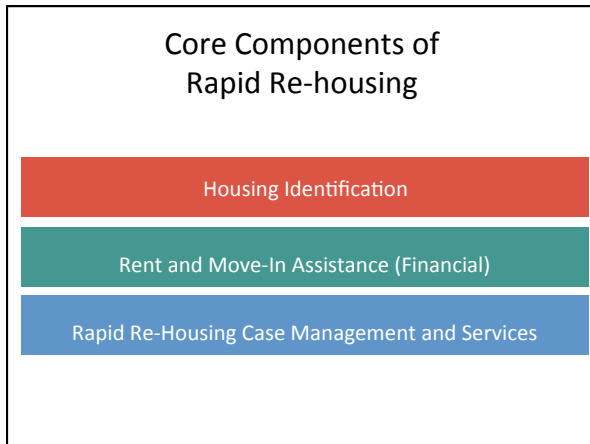
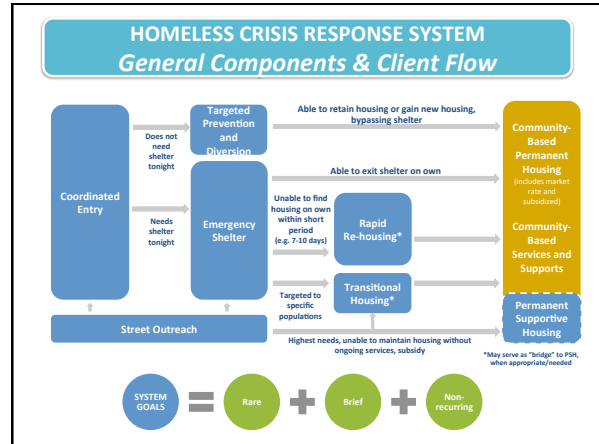
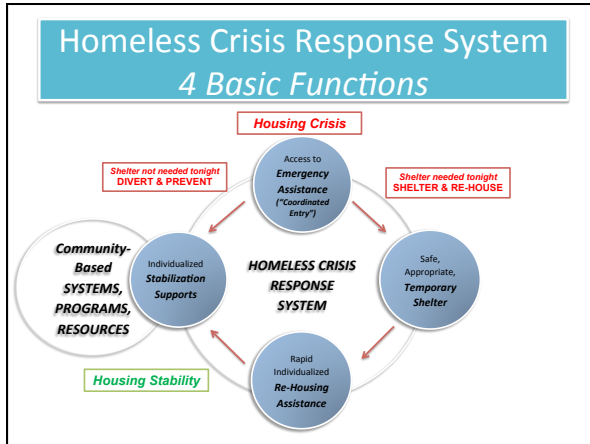
Welcome, Introductions & Overview

- **Introductions**
 - Name, Role
 - 1 thing you hope to learn from others today
- **Agenda**
 - Introduction to RRH & Level Setting
 - Core Component: Housing Identification
 - LUNCH
 - Core Component: Financial Assistance
 - Core Component: RRH Case Management & Services
 - Wrap-up

Presenters Contact Information

- **Presenters**
 - Tom Albanese, Community Shelter Board
 - talbanese@csb.org
 - Karen Carroll, Appleseed Community Mental Health Center
 - KarenC@appleseedcmhc.org
 - Tina Patterson, Homefull
 - tinap@homefull.org
 - Beth Fetzer-Rice, Homeless Families Foundation
 - bfetzerrice@homelessfamiliesfoundation.org

An Overview of Rapid Re-housing



Why Rapid Re-housing?

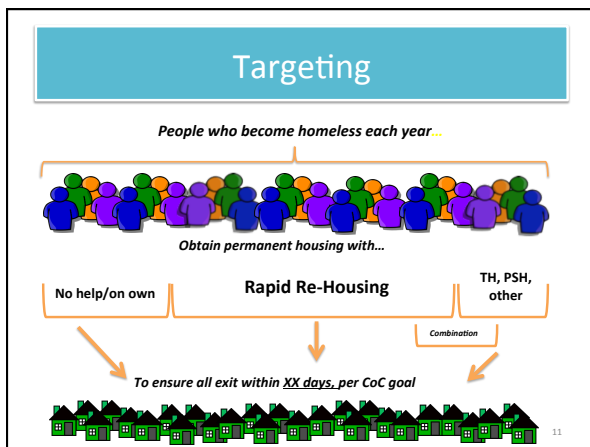
- ✓ Reduces the overall number of people experiencing homelessness
- ✓ Increases the number of people communities are able to serve
 - *Reduced length of shelter stays frees up crisis beds for others in need*
- ✓ Helps people exit homelessness quickly to permanent housing and not return to shelter
- ✓ Reduces the negative impacts of long-term homelessness
- ✓ Connects people to other community assistance to improve overall well-being and increase self-sufficiency

9

Keys to Success

- ✓ Targeting
- ✓ Housing First
- ✓ Progressive Engagement

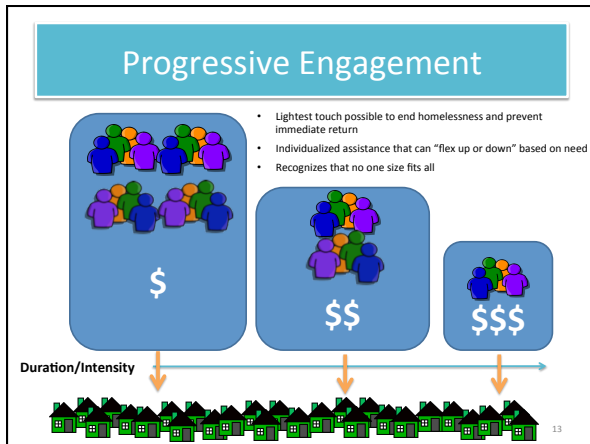
10



Housing First

Housing First approaches quickly connect people experiencing a housing crisis with permanent housing and the supports needed to maintain housing – *without* preconditions (e.g., income, sobriety, engagement in treatment, service participation).

Housing First doesn't mean Housing Only



- ### Additional Keys to Success
- ✓ *Baseline Assessment & Initial Housing Plan*
 - ✓ *Housing & Service Partnerships*
 - ✓ *Case Closure*
 - ✓ *Program Policies, Procedures, & Quality Improvement*
- 14

- ### RRH Standards and Performance Benchmarks
- Purpose and process of developing
 - Federal agency support
 - HUD
 - VA
 - USICH
 - Ohio CoCs working to incorporate

- ### How to Use the Standards
- Funder, State Leaders, and Coalitions**
- Use standards to increase the effective implementation of rapid re-housing
 - development of Requests For Proposals (RFPs) for a variety of funding streams
 - set performance and outcome goals for program
 - evaluate applications for new rapid re-housing programs
 - review current program performance.
- Providers**
- Use standards to improve their own rapid re-housing practice and to evaluate possible rapid re-housing partner agencies
- CoCs**
- Use standards during the process of developing written standards for how they plan to administer assistance through coordinated assessment.

How to Use the Standards

P = Program Philosophy and Design Standards

H = Housing Identification Standards

R = Rent and Move-in Assistance Standards

C = Case Management and Services Standards

Organization

- Principles
- Rationale
- Standards
 - Program Staff
 - Program Policies
 - Program Activities

Program Philosophy and Design: Principles

- Programs should coordinate and participate fully with the broader homeless assistance system to **engage as many households as possible**.
- Rapid re-housing is an intervention designed for and **flexible** enough to serve anyone not able to exit homelessness on their own.
- Programs **should not screen out** households based on a score on an assessment tool or criteria that are assumed, but not shown, to predict successful outcomes, such as a minimum income threshold, employment, absence of a criminal history, evidence of “motivation,” etc.
- Participants have all the **rights and responsibilities of typical tenants** and should sign a standard lease agreement.

Performance Benchmarks

- It is important to remember that rapid re-housing **is a Housing First intervention** and programs should not be screening out households based on criteria that are *assumed* to predict successful outcomes, such as income, employment, criminal history, mental health history, medical history, or evidence of “motivation.”
- The benchmarks are based on performance data of programs that *do not* screen households out on the basis of the above barriers.
- Measure performance using HMIS

Performance Benchmarks

RRH's three primary goals:

1. Reduce the length of time program participants spend homeless,
2. Exit households to permanent housing, and
3. Limit returns to homelessness within a year of program exit.

Performance Benchmarks

Reminder:

A community may not yet have any programs that meet these benchmarks.

- Set alternate performance goals for the purposes of comparison between programs.
- Set alternative goals for performance improvement, while programs work to achieve these benchmarks.

QUESTIONS?

RESOURCES

Rapid Re-housing Performance Benchmarks and Program Standards

<http://www.endhomelessness.org/library/entry/rapid-re-housing-performance-benchmarks-and-program-standards>

Rapid Re-housing "Know-How" Series

<http://www.endhomelessness.org/library/entry/rrh-know-how>

Rapid Re-housing: A History and Core Components

<http://www.endhomelessness.org/page/-/files/RRH%20Core%20Elements%20Brief.pdf>

Rapid Re-Housing Can End
Homelessness

<https://www.youtube.com/watch?v=ZD1C2s9Zxt4>